



REGIONAL PROGRAMME
NATIONAL COHESION STRATEGY



EUROPEAN UNION
EUROPEAN REGIONAL
DEVELOPMENT FUND



KOSTRZEWA®
Experts in heating

established in 1978

Maxi Bio

perfection is persuasive
It has been constructed to
face toughest challenges

models [kW]

50 75 100 150 200 285



ecoburning

Broadband 6-wire
lambda probe



Maxi Bio boilers comply with
PN- EN 303-5:2012 standard

fuels ▶



pellet



Automatic

7/24

factory
service

P265
GH

boiler
steel

H25N20S2

heat-resistant
steel



module
GSM

5 class

5 class

>91%

boiler
efficiency

3 year

3 year warranty

Boiler description

New line of Maxi Bio is a
synergy of ecology and
economy.

Constructed to face even
the toughest challenges.

Maxi Bio is a new line of automatic devices designed
to heat large scale buildings using pellet (wood
granulate) as fuel.

We are aware of the huge responsibility born by
administrators of heated areas, and hence the whole
line of Maxi Bio boilers is adapted to work in most dif-
ficult conditions, regardless of time of day or weather.

Kostrzewa constructors put a lot of effort to create a
device that is practically self-operated, for which the
quality of fuel used was not decisive.

Most essential constructional foundations:

1. Fuel used in boilers is at hand.
2. CO₂ emission = 0
3. Low electricity consumption
4. High device efficiency
5. Little operation control necessary by the user –
collaboration with additional fuel tank and
automatic fuel picking up.



- 1 Round steel boiler exchanger
- 2 Exhaust gas turbulator
- 3 Platinum Bio burner
the device is almost self-operated, operation
control has been maximally simplified to ensure
the highest operation comfort possible
- 4 Electronic control unit
- 5 Flue
- 6 Broadband lambda probe
fully automatically and more precisely
regulates the amount of supplied air, it
saves up to 20 per cent fuel
- 7 Exchanger cleaning hatch

www.kostrzewa.com.pl
info@boilersforpellets.com

www.boilersforpellets.com
www.katilaigranuliniai.lt

www.4pellet.ru
www.biokotly.com

www.granulaskatli.lv
www.pelletboilers.gr

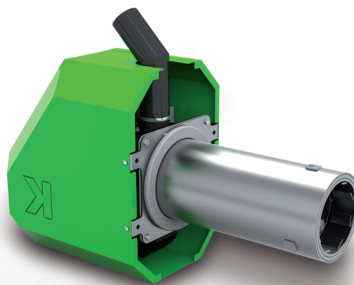
e-mail: export@kostrzewa.com.pl
e-mail: info@boilersforpellets.com

Maxi Bio is a guarantee of quality and safety

- Delivery to your home or construction site
- warranty and after-warranty service
- 3 year warranty with the option to extend it for another 2 years.
- Network of authorized service companies all over Poland
- Device and spare parts distribution network in the whole country



1l oil = 2kg pellets



Made of highest quality steel to ensure the longest durability possible

- Exchanger construction according to 3T principle (time, turbulator, temperature)
Triple-pass exchanger
Even more efficiency
Even lower emission of environmentally harmful substances
Even lower fuel consumption
- Innovative Fuzzy Logic 2 generation adjustment' –
Even more precisely modulates power of the device, thus reducing the amount of combusted fuel and electricity consumption
- Broadband Lambda probe
It perfectly doses the amount of air needed for automatic fuel combustion
- self-cleaning burner
burner equipped with additional screw, which pushes ash out of burner's grid
- negative pressure sensor
automatically protects from device's operation being continued in the case of clogging or low stack effect
- low electricity consumption
- controls the operation of the whole heating system
- automatic ignition and device shut down

1. Fuzzy Logic 2 generation method saves up to 20% fuel

You may obtain detailed technical information from manufacturer or distributor.
Manufacturer reserves the right to make construction changes of boiler to improve functioning of the device.
Power selection for the device has been made for 4th climate zone of Poland (max. – 24°C)

Platinum Bio Burner

High power and small fuel consumption

Platinum Bio burners reach huge power values, while combustion process is economic and exhaust gas emission low.

Always by one class higher

- Fuzzy Logic II generation adjustment method and two-section menu allows reduction of combusted fuel amount by 20%, as well as less sub assembly wear compared with burners manufactured by the competition (reduced frequency of necessary lighting-up significantly reduces the electricity consumption)
- Low price thanks to EU support
- Burner's components are made of heat-resistant steel H25N20S2, resisting the temperature of up to 1150°C
- 3-year warranty for the device's durability allows operation and servicing cost reduction in long-term usage

In combination with precise, automatic control of air supply, by means of broadband lambda probe, we have been able to save up to 40% of fuel consumption

Platinum Bio (industrial) control unit

with Pellets Fuzzy Logic 2-generation adjustment
large alphanumeric display makes device-user communication easier and operation facile.

- You don't have to remember the date of the next service inspection – the message will show up on a display (option).
- Statistics – the function allows, for instance, the review of minimum, maximum and average power of a burner minimum, maximum, and average fuel consumption. Temperature parameters are presented as digits and graphs on a big graphic display, and besides, there are many more useful functions
- burner's operation and its operation comfort may be compared to oil burner operation. If you want to heat a production house or any other industrial facility, which needs custom parameters you can change them in the extended servicing mode

The automatics control:

- feeder of fuel from tank
- feeder for automatic ash-pushing (option)
- burner's feeder
- pressure fan
- igniter
- central heating pump
- hot tap water pump
- mixing valve
- inverter of negative pressure fan

TYPE	MXB 50	MXB 75	MXB 100	MXB 150	MXB 200	MXB 285
Thermal power range [kw]	15-50	23-75	30-100	45-150	60-200	86-285
weight [kg]	475	559	677	885	983	1368
depth [mm]	1170	1430	1491	1551	1755	1898
depth with burner [mm]	1760	2193	2268	2487	2692	2647
width [mm]	1050	1022	1091	1120	1121	1151
height [mm]	1200	1202	1304	1480	1479	1720
fuel tank capacity [L]	305	305	305	305	305	305
fuel tank capacity [L] - option	485 770 1386	485 770 1386	485 770 1386	485 770 1386	485 770 1386	485 770 1386

Distributor:

