



**REGIONAL PROGRAMME**  
NATIONAL COHESION STRATEGY



**EUROPEAN UNION**  
EUROPEAN REGIONAL  
DEVELOPMENT FUND



**KOSTRZEWA®**  
Experts in heating

*established in 1978*

## Compact Bio

Unique look,  
always an inspiration

Second generation Fuzzy Logic automatic  
flame modulation saves up to 20% fuel.

models [kW]

10 16 24

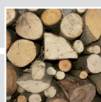
fuels ▶



pellet



pellet/oats  
50 / 50



wood



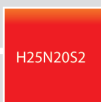
automatic



factory  
service



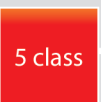
boiler  
steel



heat-resistant  
steel



GSM  
module



boiler class



boiler  
efficiency

## Boiler description

Compact Bio unique look will always be an inspiration. It is a compact device with smooth lines and structural light green powder coating. Silver galvanized components, i.e. pellet chamber provide lightness and character.

Kostrzewska design team have created a device for wood logs and pellets.

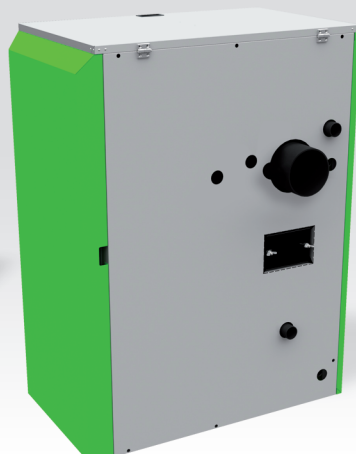
The aim was a low price, easy maintenance, low fuel consumption and compact design for small boiler rooms.

The device is comprised of four connected elements:

1. Boiler body – made in 3T (time, turbulator, temperature) technology

2. Proved solution – Platinum Bio burner, which automatically combusts pellet and oats.
3. Platinum Bio automatics, the task of which is temperature adjustment of one heating circuit + hot tap water. Innovative flame and temperature Fuzzy Logic 2 generation adjustment has been applied.
4. Large tank made of galvanised sheet to additionally secure the tank against corrosion during operation in difficult conditions.

1. Fuzzy Logic 2 generation method saves up to 20% fuel



- 1 **Platinum Bio Slim driver** is a modern microprocessor chip, which controls not only the boiler but also the central heating system and the system of hot tap water. Power of the blower is smoothly regulated by Fuzzy Logic 2 generation method.
- 2 **Loading chamber** – large loading chamber extending the time of single fuel charge combustion.
- 3 **Ceramic chamber** – increases the temperature of burning process to 900°C and with the participation of primary and secondary air it burns down left gases thus increasing the efficiency of the device (16; 24 kW - option).
- 4 **Platinum Bio burner** – auto-cleaning, innovative and first gravitational burner in Poland with Fuzzy Logic 2 generation modulation.
- 5 **Tank**
- 6 **Special thermal insulation of the device**

[www.kostrzewska.com.pl](http://www.kostrzewska.com.pl)  
[info@boilersforpellets.com](mailto:info@boilersforpellets.com)

[www.boilersforpellets.com](http://www.boilersforpellets.com)  
[www.katilaigranuliniai.lt](http://www.katilaigranuliniai.lt)

[www.4pellet.ru](http://www.4pellet.ru)  
[www.biokotly.com](http://www.biokotly.com)

[www.granulaskatli.lv](http://www.granulaskatli.lv)  
[www.pelletboilers.gr](http://www.pelletboilers.gr)

e-mail: [export@kostrzewska.com.pl](mailto:export@kostrzewska.com.pl)  
e-mail: [info@boilersforpellets.com](mailto:info@boilersforpellets.com)

# Compact Bio

- delivery to your home or to the construction site
- guarantee and post-guarantee service
- 5-year guarantee with the option to prolong it for 2 years
- network of authorized service staff all around Poland
- distribution network for devices and spare parts all around Poland



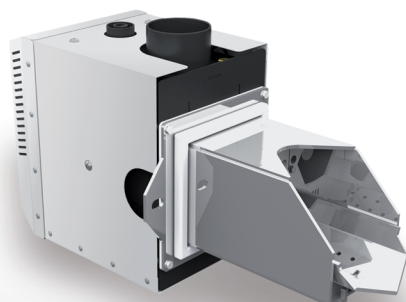
1 litre of oil = 2 kg of pellet



## The first controller in Poland with automatic power modulation

and second generation Fuzzy Logic system - reduces fuel and electrical power consumption by up to 20%

- **Ecology** – CO<sub>2</sub> emission = 0
- **Multi-fuel** – automatic fuel supply for pellets and oats – manual feeding of wood and woodchips
- **Cost-efficiency** – 2 generation Fuzzy Logic modulation of flame saves up to 20% fuel. The whole system of boiler room control is based on **soft steering** depending on the energy requirement in respective storeys of building or hot tap water requirement.
- **Economy** Platinum Bio Burner – energy-efficient engine of the whole system.
- **Innovativeness** – the exchanger construction according to 3T definition. Thanks to application of 3T method (time, turbulator, temperature) we created an exchanger with very small dimensions and high efficiency.
- **Multi-functionality** – the device is able to control several heating circuits, solar system and buffer tank – option.
- **Safety** – MAP sensor – option
- **Comfort** – the device is fully automated - it lights up and puts itself out automatically
- **Durability** – 5 years warranty.



## Platinum Bio Burner

Energy-efficient engine of the whole system. Mechanically and technically advanced element responsible for production of thermal energy from pellet. Durable, energy-efficient, reliable, quiet – made of heat-resistant and acid-resistant steel allows continuous and reliable operation for many years.

The device is constructed for pellet and oats combustion. Biomass combustion does not emit harmful gases to atmosphere, as opposed to combustion of coal or oil. By selecting renewable fuel every one may contribute to the fight against climate changes. The device is made of high quality materials and additionally covered by 3-year warranty, which lowers the cost of operation and increases confidence in new technology.

**2 generation Fuzzy Logic adjustment method reduces the amount of fuel combusted to 20% as well as reduces wear of subassemblies, as compared with burners made by competition.**

The main advantage of the burner is its simple operation based on pouring fuel into the main tank and pressing START. Within a few minutes the device will automatically light up and it will tend to keep constant temperature in rooms and constant temperature of hot tap water. Fuel tank is made of galvanised sheet – zinc coating of the sheet limits the corrosion of fuel tank. If you want to use wood –it is enough to set the wood option in the menu in central heating boiler with a fan – burner will automatically switch off, and fan will start operation.



## Platinum Bio Slim 2 generation Fuzzy Logic automatics

**Super comfort** – control over the whole system. Automatics was designed to control more devices in your boiler room.

Smoothly and intelligently it adjusts fuel and air dose. It was created to collaborate with boilers combusting pellet, oats, pea coal and wood.

- Automatic burner
- flame control by means of a photocell
- low heat inertia during start and stop
- low electricity consumption
- possibility to control up to 16 heating circuits (heaters and floor heating or hot tap water) - option
- control of the burner's working temperature – ensures security on the highest level.
- 3 phases of fuel lighting up eliminate gas explosions during lighting up
- AUTOSTART function after blackouts – restoring last settings
- air division into primary and secondary - reduces CO<sub>2</sub> emission to the level of emission from gas and oil burners
- auto-cleaning function, automatically removes deposit from burner grid - function is not present in gravitational burners
- oats - burner construction enables corn (oats) combustion - option <sup>2</sup>
- You don't have to remember the date of the next service inspection – the message will show up on a display (option).
- Statistics – the function allows, for instance, the review of minimum, maximum and average power of a burner, minimum and maximum, as well as average fuel consumption
- Temperature parameters are presented as digits and graphs on a big graphic display, and many more useful functions - (option).
- cooperation with GSM module

1. 2 generation Fuzzy Logic method saves up to 20% fuel  
2. recommended pellet/oats mix to be kept in 50/50 proportion

Detailed technical data of the device are available from the manufacturer or distributor. The manufacturer reserves the right to construction changes of the boiler, which improve the device functioning. Selection of power to the device was made for 4th climate zone of Poland (max. temperature: 24 °C).

TYPE	CB 10	CB 16	CB 24
building area [sqm]	50 - 200	85 - 250	100 - 300
nominal power [kW]	10	16	24
depth [mm]	790	790	790
width [mm]	1022	1175	1277
height [mm]	1370	1370	1370
fuel tank capacity [L]	208	208	208
stack diameter [mm]	135	160	160

Distributor: